



Federal Aviation
Administration



Facility Orientation Guide

Reid-Hillview (RHV) ATCT
San Jose, CA





TABLE OF CONTENTS

Welcome Letter	3
Reid-Hillview Tower Today	4
Reid-Hillview Tower Leadership Team	5
Our Expectations of All Employees	6
Reid-Hillview Tower and Airport Area Map	10
Reid-Hillview Tower Directory	14



Welcome Letter

Dear New Employee,

Welcome to Reid-Hillview Tower! Here you will have an opportunity to work with an outstanding team of professionals that help make us a great place to work and develop your skills. Your knowledge, abilities and positive attitude made you a highly regarded addition to our team, and I am certain that you will make a positive impact on our future.

All of us want to make your tenure at this facility as enjoyable and rewarding as possible. Please feel free to ask any questions and express your thoughts and ideas to the staff and senior leadership. Our aim is to create an informal atmosphere and involve everyone in the process of making our facility an exceptional place to work.

I look forward to working with you, and would like to welcome you again to our team!

Sincerely,

Vincent E. Bianco III
Reid-Hillview Tower Manager



Reid-Hillview Tower Today

Reid-Hillview Airport of Santa Clara County (IATA: **RHV**, ICAO: **KRHV**, FAA LID: **RHV**) is located in the eastern part of San Jose, south of San Francisco Bay, in Santa Clara County, California, USA. The airport is owned by Santa Clara County.

Reid-Hillview is a general aviation airport; there is no scheduled airline service. However, as with most general aviation airports air charter operations are available. The airport has a control tower that operates 7 a.m. to 10 p.m. local time. The FAA classifies Reid-Hillview as a reliever airport for San Jose International Airport, providing public access via general aviation to the San Jose area while separating the faster and slower traffic to different airports.

Reid-Hillview Tower History

Groundbreaking for Reid-Hillview airport came in 1937. Bob and Cecil Reid first built the Garden City Airport in 1935, which was quickly closed to make room for U.S. Route 101. Their second site was northwest of the Hillview golf course, hence the name. Until 1946, the single runway at the airport was unpaved.

Reid-Hillview was a single runway airport until 1965, when a second runway was added. The control tower was added in October 1967.

The airport became the origin for an emergency supply airlift to the Watsonville Municipal Airport following the 1989 Loma Prieta earthquake, after mountain and coastal roads were blocked, cutting off Santa Cruz and Watsonville from relief efforts by ground. The Watsonville Airport estimates that it received 100 tons of supplies via the airlift during the week following the quake. John McAvoy and Bill Dunn of the Reid-Hillview Airport Association received the 1990 Grand Award from the Bay Area's Metropolitan Transportation Commission for organizing the airlift.



Reid-Hillview Tower Leadership Team



Vince Bianco, Air Traffic Manager, Reid-Hillview Tower

Vince Bianco joined the FAA in 1989 as an air traffic controller in San Diego, CA. His employment track record includes serving as an ATCS, Plans and Procedures Specialist, Quality Assurance/Training Specialist and Operations Supervisor.

Vince has held various air traffic controller and staff positions at Livermore ATCT, Santa Barbara TRACON/ATCT and Las Vegas-McCarran TRACON. His previous position prior to joining the team at RHV was serving as Frontline Manager at Reno TRACON/ATCT.

Vince is a native of Southern California. He describes his personality as both outgoing and optimistic. Vince earned his Private Pilot's License while at his first FAA Facility (LVK) and enjoys flying and sailing. He is married and has three daughters and a Boston Terrier named Bugg-Z. Vince and family live in Santa Cruz overlooking the Santa Cruz Yacht Harbor.



Our Expectations of All Employees

Reid-Hillview Tower leadership team expects all employees to:

- Come to work, be on time
- Be prepared – mentally and physically
- Understand leave policy and manage your leave appropriately
- Be cooperative and professional
- Treat people with respect and dignity
- Take initiative
- Be accountable
- Lead by example – be a good role model
- Do not tolerate or engage in any form of harassment or discrimination
- Actively participate in training
- Know your airspace and systems, know your equipment
- Use prescribed phraseology/correct facility and equipment names
- Follow rules and procedures
- Be open to feedback – provide honest information

Be an effective team member!



General Information

LocID	District	District Mgr	Service Area	ATC Level
RHV	San Francisco	SFO (Andy Richards)	Western	6

Classification Type	Facility Hours of Operation	Controlling Facility	Overlying ARTCC
TOWER WITH RADAR	0700-2200	NCT	ZOA

Facility Manager	Facility Primary Phone Number	Congressional Representative	Senators
Vince Bianco	408-272-5917	Zoe Lofgren	Dianne Feinstein, Barbara Boxer

Building Information

ATCT Commission Year	TRACON Commission Year	Owned By	Operated By	FAA Maintained (Y/N)	FCI
1967	N/A	FAA	FAA	Y	88.85%

Control Tower Cab Floor Height AGL (ft-in)	Control Tower Cab Area (sf)	Base Building Area (sf)	OEP Airport (Y/N)	FAA Metro. Area Airport (Y/N)	Design Type
29	390	380	N	N	Type "L"



Equipment Information

TRACON Automation	Surveillance (Primary)	Surveillance (Secondary)	Voice Switch	Engine Generator (Y/N)	Power Conditioning System (Y/N)	ASDE/AM ASS (Y/N)
ARTS 3E			STVS	N	Y	N

Tower Display Type	TRACON Display Type	Number of ATCT Radar Displays	Number of TRACON Radar Displays
RACD	N/A		

Operating Information

Number of ATCT Operational Positions	Number of TRACON Operational Positions	CPC Range	# of CPCs On-Board	# of CPCs Released	# of CPCs Selected	# of Developmentals
4	N/A	8-10	8	0	0	2

Developmental %	# of Mgrs/ Supervisors	# of Admin	# of CPCs Eligible to Retire this Calendar Year	Total Staffing
42.86%	2	0	2	12

Operational Performance Information (FY09)

Actual # of Category A&B Ops Errors (FY to Date)	Actual # of Category A&B Runway Incursions (FY to Date)	Actual NAS On-Time Arrival Rate (FY to Date, if Applicable)	Actual Terminal Arrival Efficiency Rate (FY to Date, if Applicable)	Actual Average Daily Capacity (FY to Date, if Applicable)
1	0	N/A	N/A	N/A



of Operations

Fiscal Year	Actual/Projected Total Operations
FY04	211,077
FY05	205,259
FY06	173,173
FY07	158,702
FY08	136,092
FY09 Proj	156,812
FY10 Proj	160,011
FY11 Proj	163,284
FY12 Proj	166,631
FY13 Proj	170,055
FY14 Proj	173,559



# of Operations to Date this Fiscal Year	61,777
--	--------

Finance Information (FY09)

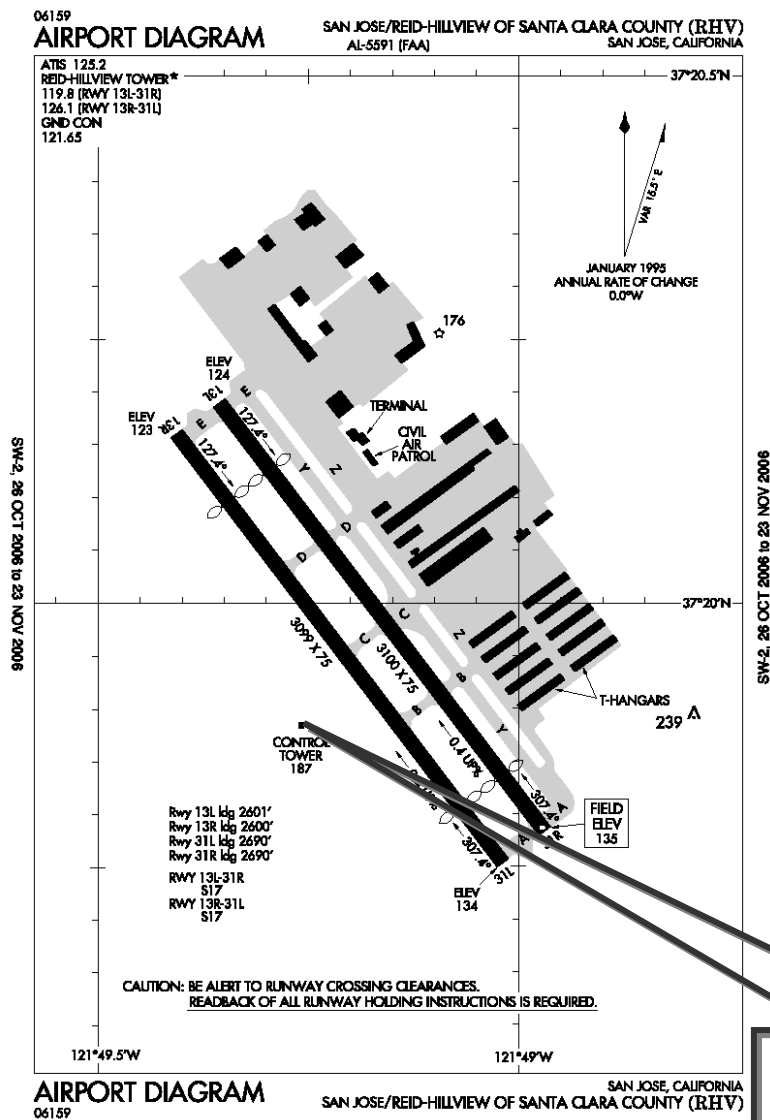
Actual Facility Labor Obligation Per Operation	Actual Direct-Indirect Staffing Ratio	Actual LDR Compliance Rate	S/L Used
\$11.69			

Finance Information (FY08)

Actual Facility Labor Obligation Per Operation	Actual Direct-Indirect Staffing Ratio	Actual LDR Compliance Rate	S/L Used
\$12.77	12	0	



Reid-Hillview Tower and Airport Area Map



RHV Control Tower

The tower is home to 12 FAA controllers and staff.



Photos of the Airport

Below is a selection of photos of runways and facilities of Reid-Hillview Airport.



Overlooking transient parking and control tower



Aerial view of airport from the east



Federal Aviation
Administration



Overhead view of Reid-Hillview Airport



External links

- [Reid-Hillview Airport](#) (official site)
- [The Airport Shoppe](#) - On-field pilot supplies
- [Reid-Hillview Airport Association](#)
- [Experimental Aircraft Association \(EAA\) Chapter 62](#) - Local chapter of the [Experimental Aircraft Association](#)
- [Santa Clara Valley Chapter of Ninety-Nines](#) - Local chapter of the [Ninety-Nines](#) International organization for women pilots
- [Civil Air Patrol](#) Squadrons based at RHV: search & rescue, aerospace education
 - [Squadron 80](#) - Senior squadron, adult volunteers
 - [Squadron 36](#) - Cadet squadron, youth volunteers
- [Take Flight for Kids](#) - A charity that gives rides to disabled children in private aircraft
- [GaryAir](#) - Air taxi service
- [KRHV page at ClearanceWiki](#) - Airport notes for instrument-rated pilots
- Photos and video
 - [search for "reid-hillview airport" at Flickr](#)
 - [search for "reid-hillview airport" at WebShots](#)
 - [search for "reid-hillview airport" at YouTube](#)
- [Approval Of Noise Compatibility Program for Reid-Hillview Airport, San Jose, CA](#) at [Environmental Protection Agency](#)
- [FAA Airport Master Record for RHV \(Form 5010 PDF\)](#)
- [FAA Airport Diagram \(PDF\)](#), effective 30 July 2009
- Resources for this airport:
 - AirNav [airport information for KRHV](#)
 - ASN [accident history for RHV](#)
 - FlightAware [airport information](#) and [live flight tracker](#)
 - NOAA/NWS [latest weather observations](#)
 - SkyVector [aeronautical chart for KRHV](#)



Reid-Hillview Tower Directory

FAA AIR TRAFFIC CONTROL TOWER -

2204 Waverly Avenue, 95122	408/272-7014/5917	Vince
Bianco, Air Traffic Manager		

AIRPORT OPERATIONS AND COUNTY AIRPORTS ADMINISTRATION -

2500 Cunningham Avenue		
Director County Airports	408/929-1060	Carl
Honaker		
Asst. Director County Airports	408/929-1060	Eric
Peterson		
Business Manager	408/929-1060	Larry
Feldman		
Noise Program Manager	866/638-2344	Ken
Betts		
Administrative Assistant	408/929-1060	Anna
Griffin		
RHV Airport Operations Supervisor	408/929-2256	Chris
Nucci		
RHV Maintenance Building	408929-2256	

AREA AIRPORTS NOISE COMPLAINT NUMBERS

	Local	Toll Free
• All County Airports (RHV, PAO, E16)	408/272-0290	866/638-2344
• Moffett Federal Airfield	650/604-2940	
• San Carlos Airport	650/573-2666	
• San Francisco Int'l Airport	650/876-2219	877/206-8290
• San Jose Int'l Airport	408/998-0707	
• San Jose Police Dept. Helicopter	408/277-5424	



CIVIL AIR PATROL –

2490 Cunningham Avenue

- Squadron 36 408/258-2720 Jim Sena (Cmdr)
- Squadron 80 408/258-2720 Mike Carter (Cmdr)

SWIFT AVENUE FACILITY –

2105 Swift Avenue

Subleases:

- Medevac 408/574-3800 Jeff Dane x7121
- Rohi Community Outreach 408/926-2926 unk
- Palmetto Ranch 408/275-8891 Dr. Vincent
- Hangar Tenants Bob Mackey

LP ENTERPRISES -

- 2635 Cunningham Avenue 408/360-9200 Ruby & Niru Lamba
- 408/483-6477 – cell
- Chevron Fuel (LP Enterprises) 408/929-2106 Ruby Lamba

Subleases:

- Enterprise Rent-A-Car 408/937-4988 Melanie Luong
- Airport Shoppe (pilot supplies) 408/923-2625 Phoebe Walls
- Amcom Consultants 408/272-8800 Anil Pandya
- Flying S Aviation (maintenance) 408/258-9462 Brian Stout

AERODYNAMIC AVIATION (formerly Amelia Reid Aviation) -

- 2650 Robert Fowler Way 408/251-4939 Zdravko Podolski

GEE BEE AERO

- 2502 John Montgomery Drive 408/251-2151 Robert Barnick

Subleases:

- Victory Aviation 408/836-5122 Kregg Victory
- 2550 John Montgomery St



BARNICK AIRPORT PROPERTIES –

2660 John Montgomery	408/251-2151	Robert Barnick
<u>Subleases:</u>		
• Rm 1 Aborn Properties	408/272-7298	Gary Walker
• Rm 2 El Paisano	408/270-6202	Alex Ayala
• Rm 3 Amfasoft Corporation	408/258-7869	Farhana Ahmed
• Rm 4 Wooding Elect	408/254-9663	Scott Wooding
• Rm 5 Continuing Ed. Serv.	408/729-9088	Dr. Priscilla Brown
• Rm 6 Magnum Drywall	408/483-0625	Gary Robinson
• Rm 20Patt’s Cleaning Serv.	408/363-8671	Patt Alonzo
• Rm 21 Saba Mgmt. Group	408/272-5146	Sheila Behnamnia
• Rm 21A M.D. Wooding & Assoc.	408/251-0307	Mark Wooding
• Rm 22V+B Transportation	408/937-6135	Flavia Tercero
• Rm 22A Amfasoft Corporation	408/258-7869	Farhana Ahmed
• Rm 23 Amfasoft Corporation	408/258-7869	Farhana Ahmed
• Rm 24 Amfasoft Corporation	408/258-7869	Farhana Ahmed
• Rm 25 Be Encouraged Int’l		Al Whipper
• Rm 25A Global Economic Support		
• Rm 26Mr. Peabody’s The Carpet	408/254-1949	Terry/Bernice Peabody
• Rm 27Market-Partners Inc.	408/251-5100	Martin Lewis

JURADO PROPERTIES

2555 Robert Fowler Way	408/997-6383	Frank Jurado
<u>Subleases:</u>		
• Air Accord (flight training)	408/258-6321	Yuzo Wakita

MARCONET PROPERTIES

2655 Robert Fowler Way	408/926-4030	Jeff Marconet
Exxon Fuel	408/926-4030	Jeff Marconet
<u>Subleases:</u>		
• Squadron 2 (flight training)	408/272-0518	Mike McClelland



Federal Aviation
Administration

TRADE WINDS, INC.

2505 Cunningham Avenue (JWA) 408/729-5100

Walter Gyger

NICE AIR

2575 Robert Fowler Way

408/729-3383

Hiro Takai

2555 Robert Fowler Way #A

BP Fuel

408/729-3383



– END –